



RICKETY **BRIDGE WINES**

PROJECT CASE STUDY

Dekro Paints have a wide variety of Acrylic, Enamel, Epoxy and Polyurethane coatings suitable for decorating surfaces within the wine industry, and can be coated on various substrates including walls, isoclad composite panels, steel, wood and concrete...

IMPORTANCE OF WINE INDUSTRY FRIENDLY COATINGS:

Cork taint is a broad term referring to a wine fault characterised by a set of undesirable smells or tastes found in a bottle of wine, especially spoilage that can be detected after bottling, aging and opening. The chief cause of cork taint is the presence of the chemical compounds 2, 4, 6- trichloro anisole (TCA) or 2, 4, 6- tribromo anisole (TBA) in the wine, which in many cases will have transferred through the cork rather than from it.

Dekro's Organohalogen free solutions take the headache out of wine cellar maintenance. The major organohalogens (organic compounds containing chlorine, bromine or iodine) of interest to the food industry are the halophenols and haloanisoles.

Our coatings are regularly tested for releasable concentrations of organohalogens that can contribute to "cork taint" and related off-flavours in wineries and wine.

The atmospheric analysis released by these products revealed NO or very low levels of organohalogens (ANISOLE & PHENOLS). In cases where the levels are very low, it is compared with sensory thresholds. These include the organochlorides and organobromine compounds and is therefore safe for use in a wine cellar storage facility in this regard.

PRODUCTS:

- **MEDIFLEX**
- **HYDROLOCK PRIMER**
- **ADTHANE ENAMEL**

MEDIFLEX

Mediflex is a high gloss, single pack waterborne polyurethane based coating designed with specific hygiene functionality.

The in-film preservative is designed to remain permanently locked in and active ensuring no growth of surface micro-organisms. The specific features of this product can be summarized as - fast drying; glossy finish; hard wearing with rapid physical properties development. The polyurethane toughness couples with unusually high retention of film integrity plays a key role in ensuring longevity of performance. Due to rapid drying, recoatability, and exceptionally fast strength development, the coating will enable rapid re-use of the building or utility when used as a new build or maintenance coating. Mediflex is designed to give the best balance currently available of gloss with a high build, plus flow to ensure surface defects from application equipment are minimised. Mediflex is ideal for use in hospitals; food storage and processing; kitchens; breweries; dairies; wine cellars; educational establishments; general industrial and agricultural; marine; laboratories; offices; corridors and general institution use.

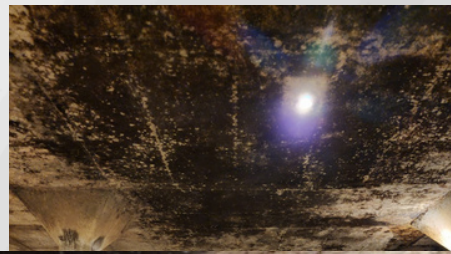
HYDROLOCK PRIMER

Hydrolock Primer is a rapid curing, water based primer consisting of two components: a pre-reacted epoxy resin dispersed in water (Part A), and a waterborne modified polyamine solution (Part B). In it's wet mixed state, it is milky green and slightly viscous. Hydrolock is suitable for use on most sound and eroded building surfaces where both a penetrative and surface-lying key for subsequent paint coats is required. Substrates include concrete (including damp and partially cured cementitious renders, screeds and mortars), bituminous surfaces (e.g., asphalt), roofing felts, insulation foams, wooden protrusions and previously painted surfaces. The product's rapid curing properties allow faster contract completion and consequent savings on site/labour costs.

ADTHANE ENAMEL

Adthane Enamel is a Polyurethane (Twin Pack) coating. Adthane Enamel, because of its outstanding properties, can be applied to a wide variety of substrates - plaster, polyester, wood, metals and plastics, after priming, where outstanding performance is required. It is recommended for the following - boats, furniture, aircraft, vehicles, chemical plants and appliances. Adthane has the following excellent properties: adhesion; flexibility; hardness; gloss retention; non-yellowing and durability. It is also resistant to detergents, chemicals, solvents, lubricants, fuel oil and high-octane fuels. Suitable for metal, wood and concrete surfaces where chemical resistance is required.

BEFORE:



AFTER:

